

# Modulator Unit

## Removal/Installation

### Removal:

#### CAUTION:

- When removing the modulator unit or after removing it, be careful not to turn it upside-down or lean excessively.
- Do not spill brake fluid on the car; it may damage the paint; if brake fluid does contact the paint, wash it off immediately with water.
- Take care not to damage or deform the brake pipes during removal and installation.
- To prevent the brake fluid from flowing, plug and cover the hose ends and joints with a shop towel or equivalent material.
- Do not loosen the relief plug on the accumulator.

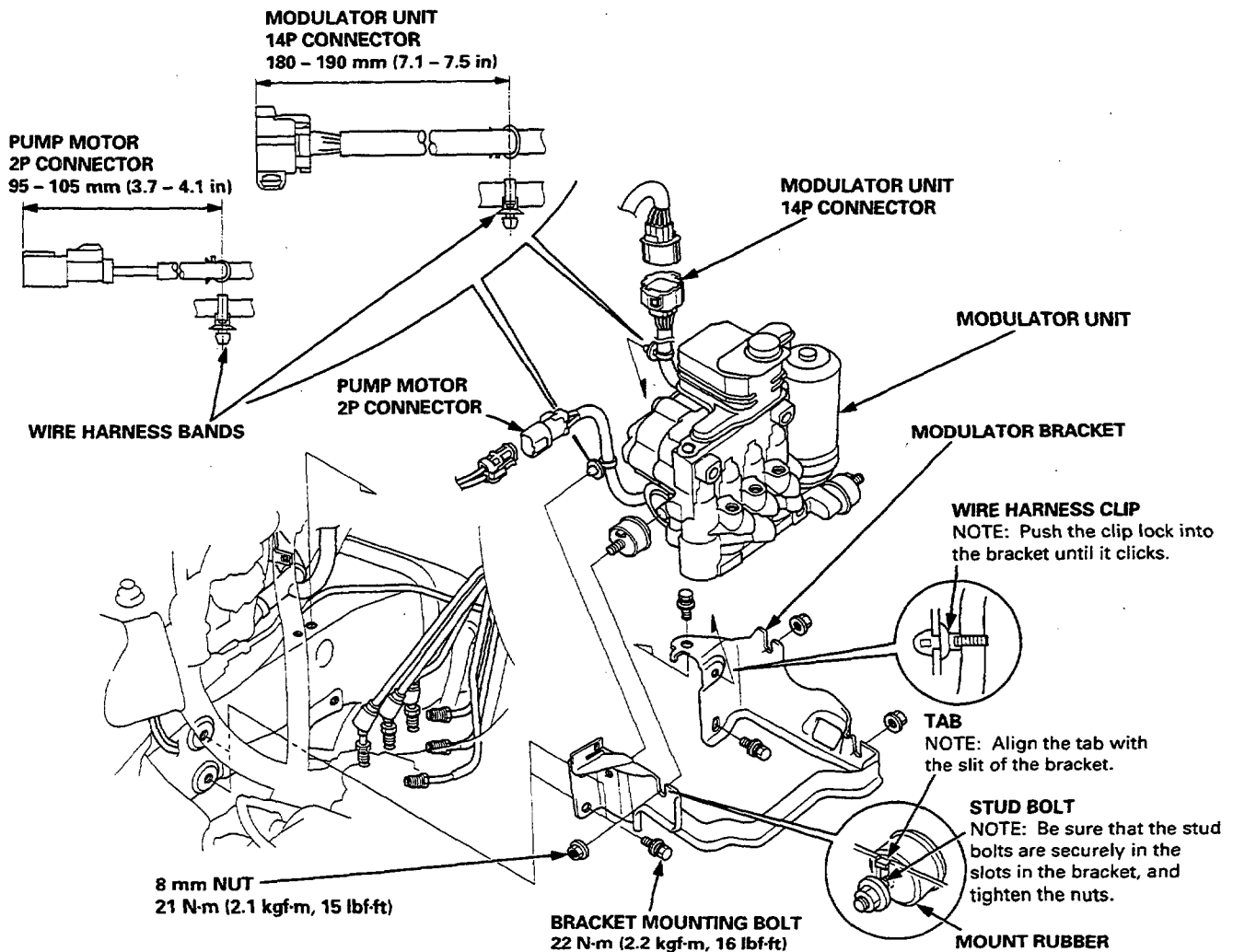
NOTE: LHD type is shown, RHD type is symmetrical.

1. Remove the intake air duct.
2. Remove the battery and battery setting base.
3. Disconnect the modulator unit 14P connector and pump motor 2P connector.
4. Remove the wire harness clip from modulator bracket.
5. Remove the three 8 mm nuts, and remove modulator unit from the bracket.

NOTE: When the pump motor or the modulator unit is replaced, bleed the high-pressure brake fluid first (see page 19-132).

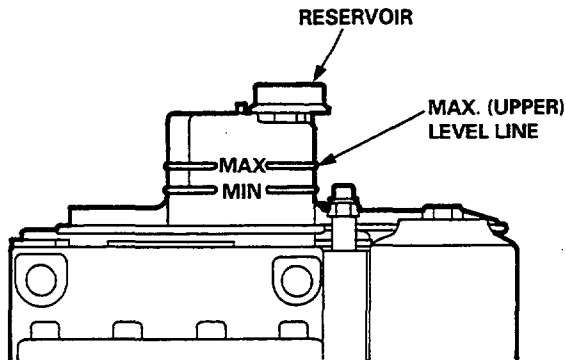
### WIRE HARNESS CLIP/BAND

NOTE: When a new clip and band are installed, adjust them to the dimensions as shown below.

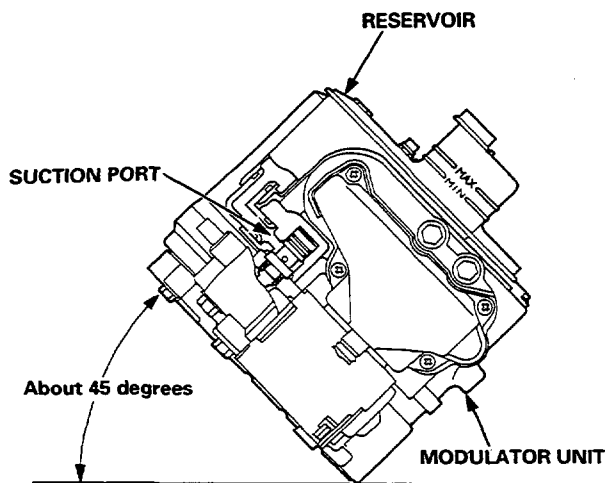


## Installation:

1. Check whether the brake fluid level in the reservoir is at the MAX (upper) level.  
If level is low, add fresh brake fluid to the MAX (upper) level.



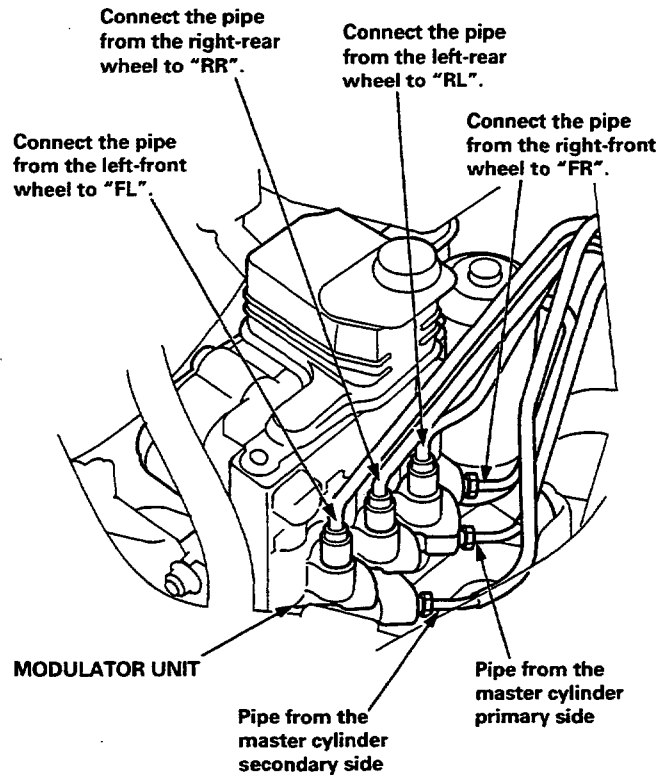
2. Before installing the modulator unit on the car, be sure to bleed the air from the suction port in the modulator unit by leaning the modulator unit to one side slowly (about 45 degrees) as shown.



**CAUTION:** When installing the modulator unit, be careful not to turn it upside-down or lean excessively.

3. Install the modulator unit in the reverse order of removal.

**NOTE:** Check the letters stamped on the modulator body, and connect the brake pipes properly.  
Tighten the flare nuts to 19 N·m (1.9 kgf·m, 14 lbf·ft).



4. Start the engine and let it idle for a minute.  
Check that:
  - ABS indicator light is off.
  - Brake fluid is not leaking from the brake pipe joints.
5. Stop the engine.
6. Check whether the brake fluid level in the reservoir is at the MAX (upper) level.  
If level is low, add fresh fluid until the reservoir is refilled to the MAX (upper) level.
7. Bleed air from the brake system (see page 19-6).
8. Check the ABS function using the ALB checker (see page 19-129).